

City Hyde Park Chicago, IL

Facades



Project Details

Owner

1525 HP, LLC

General Contractor

Linn-Mathes, Inc.

Architect

Studio Gang Architects

Engineer

Matsen Ford Design

Building Type

Retail

Onsite Assembly Date

October 2015

Panel Type

StoPanel Classic ci,
StoPanel Metal ci and
StoPanel Backup

Project Overview

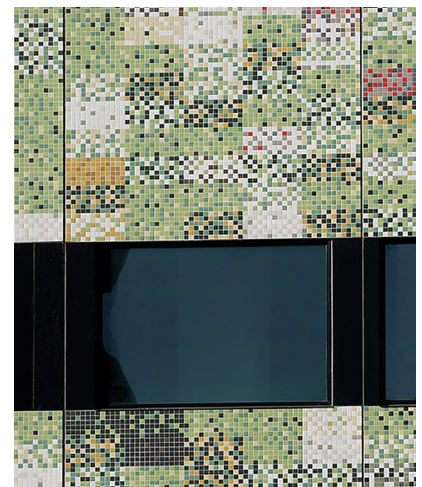
The project involved turning the two-story retail base of a new residential midrise tower in Chicago into a colorful and intricate tile mosaic depicting the four seasons of the year. The complex job included installation of 20,660 sq.ft. of three different types of panels – StoPanel Backup with mosaic tile, StoPanel Classic ci and StoPanel Metal ci.

Job Requirements

The complexity of the job initially led StoPanel Affiliate, Grayhawk, to turn down the project before deciding that if someone had to solve these challenges, it might as well be them. World-renowned architecture firm, Studio Gang, had designed a sophisticated tile mosaic that wrapped around the building interpreting the four seasons. The design included punched windows made to appear as though they were ribbon windows. The intricate job involved multiple textures including metal and tile but cost still remained a concern. Adding to the logistical considerations was the fact that Grayhawk's Kentucky location was far removed from the Chicago jobsite.

Smart Solution

To create the four seasons mosaic design intent, Grayhawk used StoPanel Backup with the mosaic tile installed over cement board sheathing. They produced 44 custom tile mats, each with a unique color composition created from 2-inch tiles and designed by Studio Gang. The tile mats were numbered, shipped to Grayhawk's fabrication facility and installed in a precision manner according to the architectural plans. The final effect was mesmerizing. StoPanel Metal ci panels were used between the punched windows to achieve the desired illusion of ribbon windows. StoPanel Classic ci panels were used strategically to further mitigate costs. All of the StoPanels were fabricated at Grayhawk's Lexington, KY panel plant, loaded and shipped to the site where a Chicago-based erector then installed the panels on-site in a short period of time. The finished job was an achievement in both practical ingenuity and aesthetic design.



Credit All Photos: Eric Levin/Silliman Group